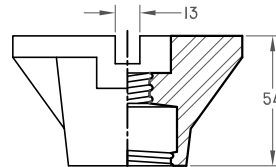
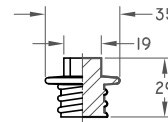
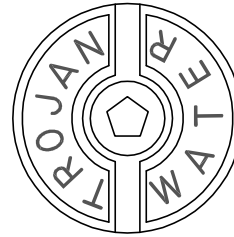
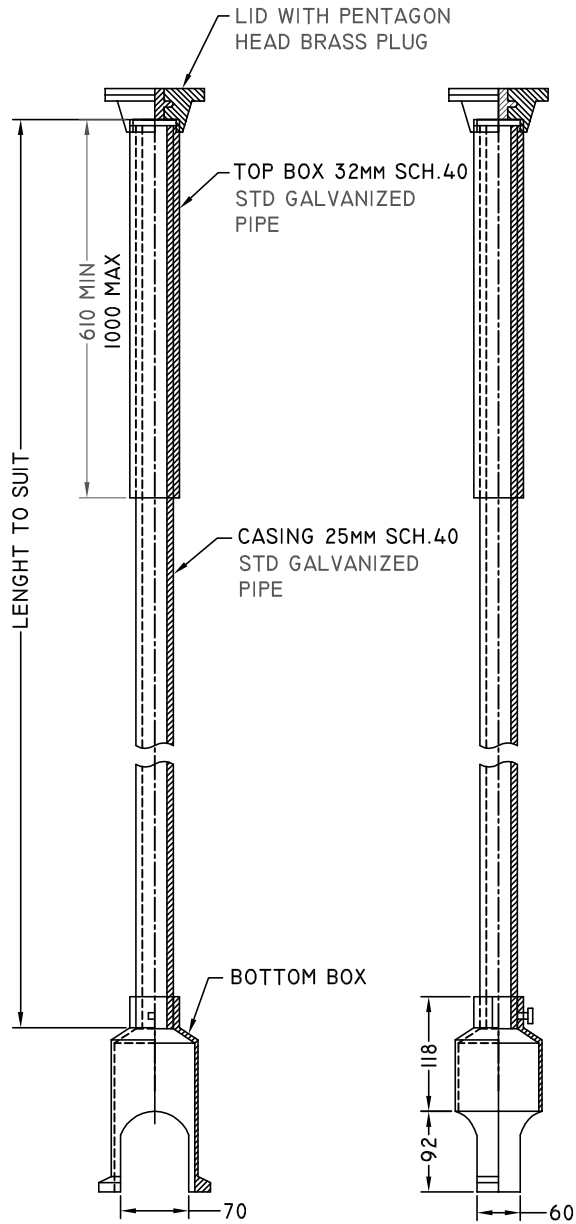




# CORROSION RESISTANT SERVICE BOX

CCSBI



LID WITH BRASS PLUG

MATERIAL:  
 THE EXTERIOR & INTERIOR OF THE BOTTOM BOX SHALL BE FACTORY COATED.  
 GALVANIZED PIPE SHALL CONFORM TO ANSI/AWWA C 800-84 SECTION A.6.  
 CAST IRON CAP AND BOOT- ASTM A48.  
 BRASS PENTAGON PLUG - CDA 60-40 YELLOW BRASS.

SMALL BOOT FOR 20MM & 25MM SERVICE

DIMENSIONS ARE IN MILLIMETERS