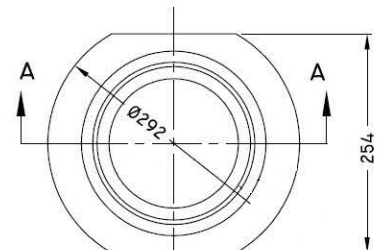
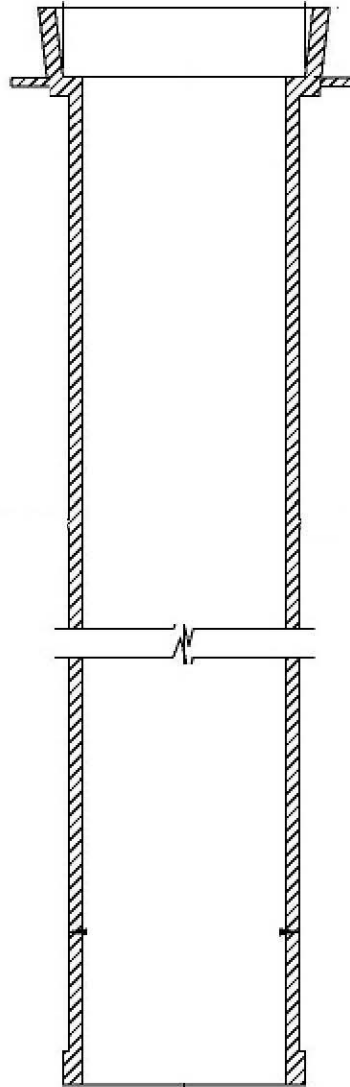




Please note that drawings are approximate and not to be used for engineering purposes - please contact us for specific dimensions.

**TYPE A VALVE BOX
48IN TOP SECTION WITH TOP FLANGE**

**7105C
7105WP-48**



PLAN

SECTION A-A

EPOXY COATING:

AWWA C210 or C213 and CSA STANDARD Z245.20-10

MATERIAL:

* GREY CAST IRON CLASS 20
A.S.T.M. A48(LATEST EDITION).

MASS = 40.6KG (90.2LBS) ±3%.

ISO 9001-2000 CERTIFIED

RATED FOR HS-20 LIVE LOAD

MEASUREMENTS IN MILLIMETERS

TROJAN INDUSTRIES INC.
CALGARY • EDMONTON, ALBERTA